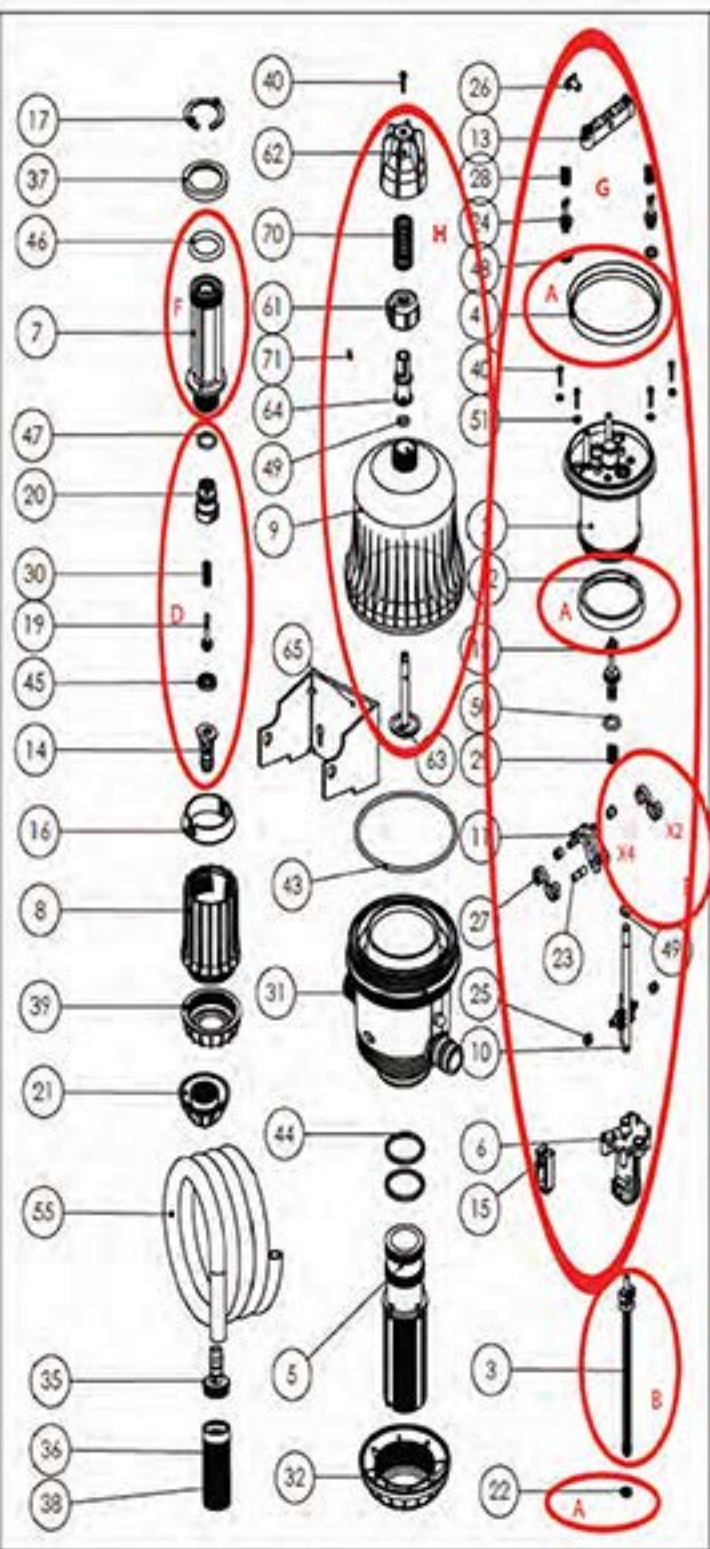




1401M 0.1% - 0.9%



No.	Description	Part Number
A	MixRite 569/1401 Lip Seal Kit, LFR	36000000210
B	1401 Piston connecting bar kit, with o-ring (.1-.9%)	36300000016
D	Check Valve Kit	36000000145
E	Engine Spring Kit	36000000191
F	Mixrite .1-.9% 14GPM, Chemical Cylinder and O-ring	36300000017
G	Engine Repair Kit, 14-Series MixRite	36300000019
H	On/Off Dome Cover	36300000044
5	Mixrite 1401 1% Cylinder Support, No O-ring	36302012205
8	14-Series Adjustment Sleeve	36305003808
16	14-Series Mixrite Adjustment Sleeve Scale Insert	36316003966
17	14-Series MixRite Chemical Cylinder Clip	36317001167
21	14-Series Check Valve nut	36307003234
22	MixRite 569/1401 Chemical Piston Seal, Viton Extreme	36000030122
31	MixRite Body, 14-Series, 3/4" threads	36030162231
32	Cylinder Support Nut, 14-Series/500-Series	36030161532
37	14-Series MixRite Chemical Cylinder Spacer	36315003176
39	14-Series Latch Nut for Adjustment Sleeve	36306003139
43	Dome Cover O-ring	38022430243
44	Cylinder Support O-ring, 500 & 14-Series	38022205244
46	MixRite 569/1401 Chemical Cylinder O-ring	38023135246
65	Mounting Bracket	36030162765

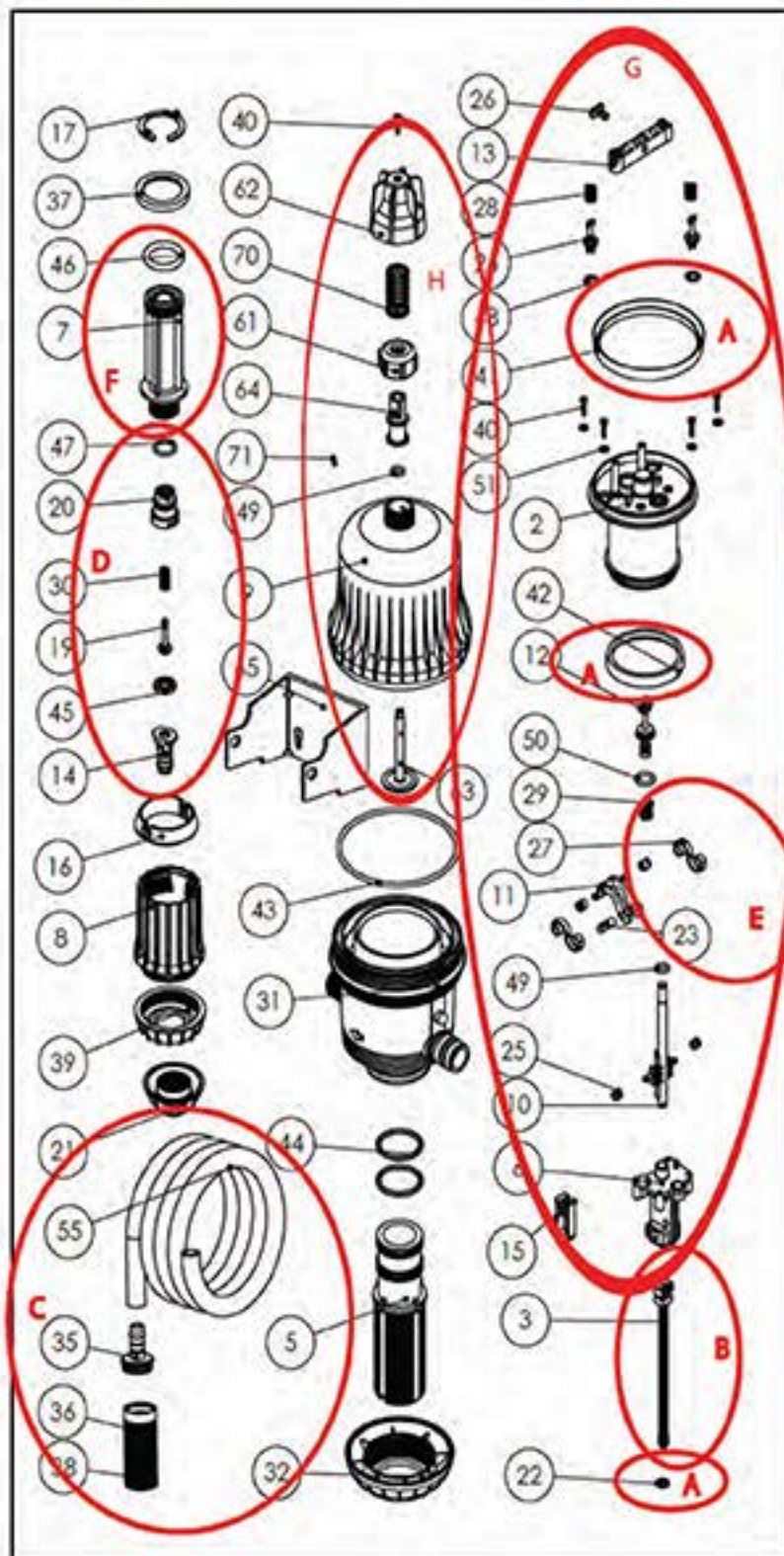
	Suction Filter, w/ 10mm barb	36000000171
	Vinyl tubing, 8-ft, 3/8" ID	100.12L



H	Air Release Dome Cover	36300000058
---	------------------------	-------------

DEMA

14.CW.05 0.5% - 5%



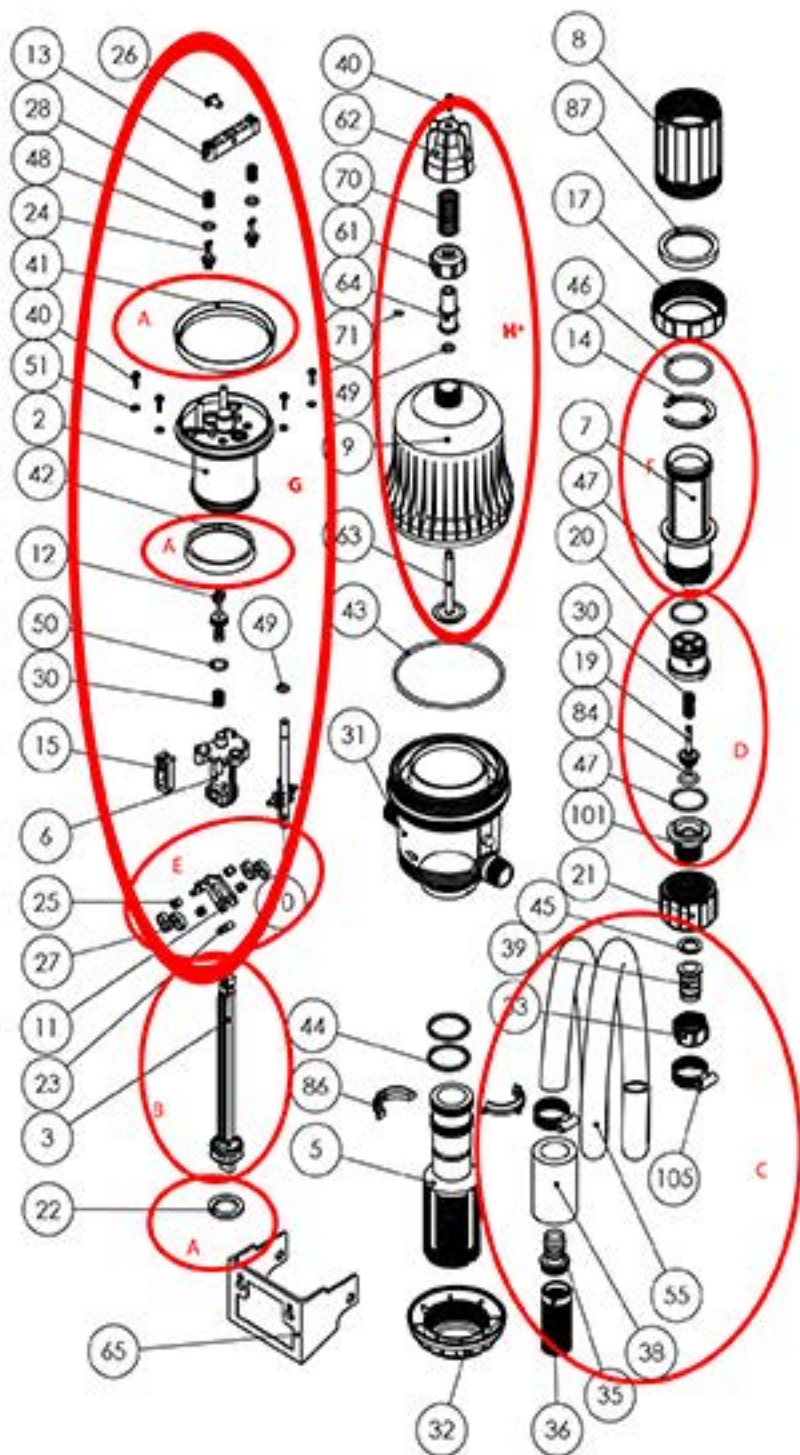
No.	Description	Part Number
A	Lip Seal Kit, 5% Models, 14GPM, LFR (1405)	3630000001
B	14-Series Connecting Bar/Piston Kit w/O-ring (1405)	3630000003
C	Suction Tube Kit - 1/2" ID tube & Strainer	36000000021
D	Check Valve Kit (includes check valve nut), 12MM	36000000128
E	Engine Spring Kit	36000000191
F	14-Series 5% Suction Cylinder Kit (1405), w/ O-ring	36300000005
G	Engine Repair Kit, 14-Series MixRite	36300000019
H	On/Off Dome Cover	36300000044
5	Mixrite 1405 Cylinder Support, No O-ring	36302051205
8	14-Series Adjustment Sleeve	36305003808
16	14-Series Mixrite Adjustment Sleeve Scale Insert	36316003966
17	14-Series MixRite Chemical Cylinder Clip	36317001167
21	14-Series Check Valve nut	36307003234
22	Chemical Piston Seal, 1405	36000052022
31	MixRite Body, 14-Series, 3/4" threads	36090162231
32	Cylinder Support Nut, 14-Series/500-Series	36090161532
37	14-Series MixRite Chemical Cylinder Spacer	36315003176
39	14-Series Latch Nut for Adjustment Sleeve	36306003139
43	Dome Cover O-ring	38022430243
44	Cylinder Support O-ring, 5% units (two per unit)	38022205244
46	MixRite 1402A/M Chemical Cylinder O-ring	38022175246
65	Mounting Bracket	36090162765
1405 uses 12MM Barb...not 10MM		
1405 comes standard with filter with 12MM barb		



H	Air Release Dome Cover	36300000058
---	------------------------	-------------

DEMA

1410M 1% - 10%



NO.	DESCRIPTION	PART #
A	LIP SEAL KIT	36000000213
B	BAR & PISTON KIT	36300000008
C	SUCTION TUBE KIT	36000000028
D	CHECK VALVE KIT	35200000059
E	MECHANICAL SPRING KIT	36000000191
F	CHEMICAL CYLINDER	36000000178
G	LFR ENGINE KIT	36300000019
H	ON/OFF COVER*	36300000044
5	SUPPORT CYLINDER	36030010305
14	CHEMICAL CYLINDER CLIP	36319101167
17	LATCH NUT	36030162217
21	CHECK VALVE NUT	36030622100
22	PISTON SEAL VE	36000031022
32	CYINDER SUPPORT NUT	36030161532
33	SUCTION HOSE NUT	36030120033
39	19MM HOSE BARB	32454759122
SPECIAL ORDER		
8	ADJUSTMENT SLEEVE	36030181708
87	ADJUSTMENT NUT ADAPTER	36019013376



H Air Release Dome Cover 36300000058